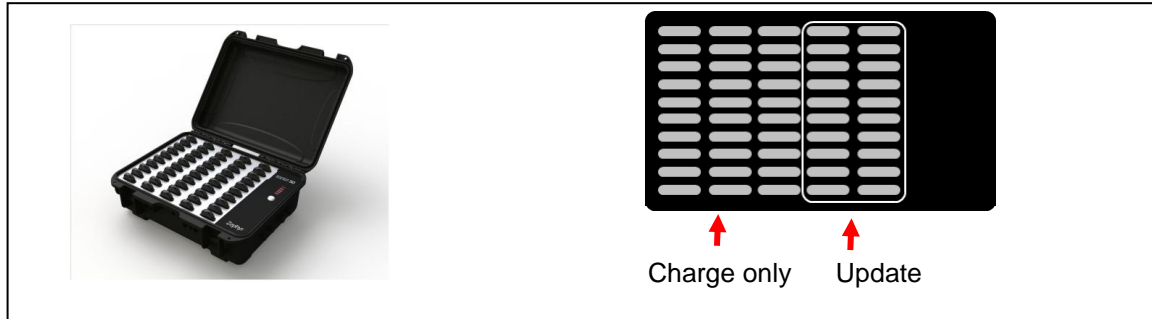


## **BioHarness 3.0 Firmware Upgrade**

1. Connect the BioHarness modules to your PC platform using the single or multi device cradle or PSM system case. The right hand 20 slots (two vertical rows) are marked as available for USB connection. The left hand 30 slots are for charging devices only.



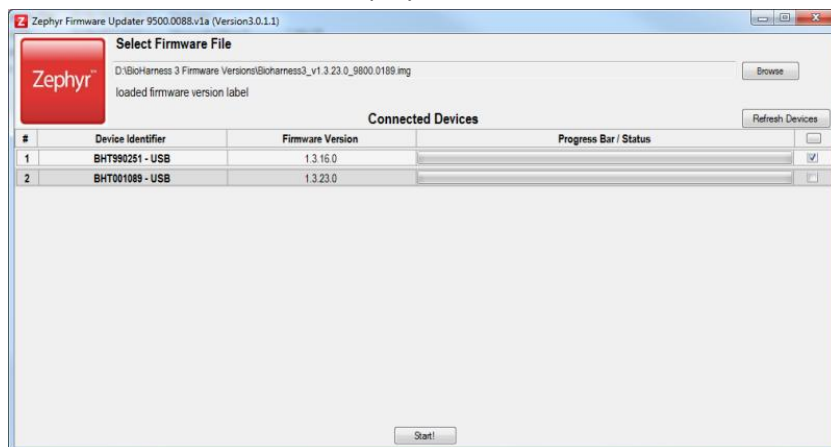
The orange (amber) LED will flash, indicating battery charging (constant = 100% charged)

2. Locate the *ZUSBUPDATER.exe* utility, which is in the Firmware Upgrade directory of every OmniSense CD or download image, and double-click to start.
3. A dialogue will display asking you to enter your name. This is NOT a security check – it merely records your name against device reconfigurations made in a log file at *C:\Program Data\Zephyr\ZephyrDeviceUpdateLog.csv*

A screenshot of a Windows-style dialog box titled 'Name Entry Form'. It contains two radio buttons. The first is selected and is labeled 'Enter your name here for logging purposes'. Below it is a text input field containing 'Zephyr User'. The second radio button is labeled 'Or select your name from the choices below' and is followed by a dropdown menu. At the bottom of the dialog is a button labeled 'Update Devices'.

This will let system owners track configuration changes historically. Once entered and saved, a name can be selected from the pulldown list.  
Select *Update Devices* to display the updater tool.

- All detected devices will be displayed.



- Click *Browse* to locate the desired firmware image file. Firmware image files are included in firmware upgrade directories, or can be downloaded from

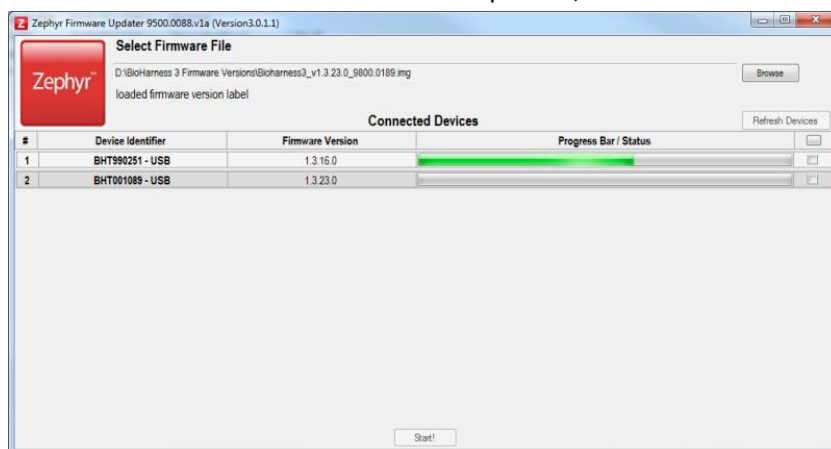
<http://www.zephyranywhere.com/support/downloads/>

There are three variants of the BioModule 3.0, which require different firmware images. Early versions of the BioModule contained only a Bluetooth transmitter. An ECHO 802.15.4 transmitter was added in 2012. Bluetooth® Low Energy (BLE) support was added in 2014. The devices are identical externally.

BioModule Type	Hardware Part No.	Firmware Image suffix
Bluetooth only	9800.0153	_1G (e.g. BioHarness3_v1.4.5.0_1G)
Bluetooth + ECHO	9800.0189v6-v9g	_2G (e.g. BioHarness3_v1.4.5.0_2G)
Bluetooth + ECHO + BLE	9800.0189.v9k	_3G (e.g. BioHarness3_v1.4.5.0_3G)

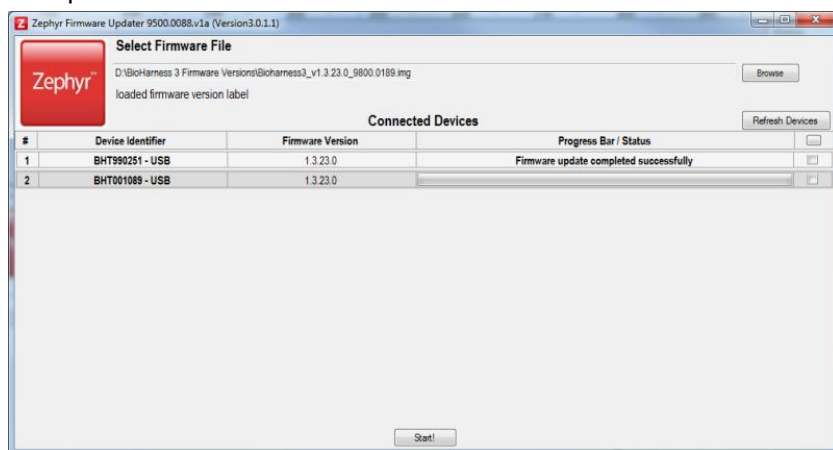
Hardware Part Number can be displayed using the Zephyr Config Tool.

- Check the boxes of those devices to be updated, and select *Start!* To update



The green and red LEDs will flash while the device is being reprogrammed.

7. A message will display on successful update of device firmware, or display a diagnostic message if the update has failed



If an update fails, retry the process.

8. Contact [support@zephyrtech.zendesk.com](mailto:support@zephyrtech.zendesk.com) if any problems occur.