

## **BioHarness 3**

## **Driver Install Instructions**



## Contacts

Mail: Zephyr Technology Corp. 1 Annapolis St., Suite 200, Annapolis MD 21401  
Email: [support@zephyrtech.zendesk.com](mailto:support@zephyrtech.zendesk.com)  
Web: [www.zephyranywhere.com](http://www.zephyranywhere.com)  
Phone: 443-569-3603  
Fax: 443-926-9402

Version	Description
2013-MAY-14	Initial Release – driver version 1.0.1

The information in this document is believed to be accurate in all respects at the time of publication but is subject to change without notice. Zephyr™ Technology assumes no responsibility for errors or omissions, and disclaims responsibility for any consequences resulting from the use of information included herein. Additionally, Zephyr™ Technology assumes no responsibility for the functioning of undescribed features or parameters. Zephyr™ Technology does not assume any liability arising out of the application or use of any product, and specifically disclaims any and all liability, including without limitation consequential or incidental damages.

Zephyr™ Technology products are not designed, intended or authorised for use in applications intended to support or sustain life, or for any application in which the failure of the Zephyr™ Technology product could create a situation where personal injury or death may occur. Should Buyer purchase or use Zephyr™ Technology products for any such unintended or unauthorised application, Buyer shall indemnify and hold Zephyr™ Technology harmless against all claims and damages.



**Contents**

1. INTRODUCTION ..... 4

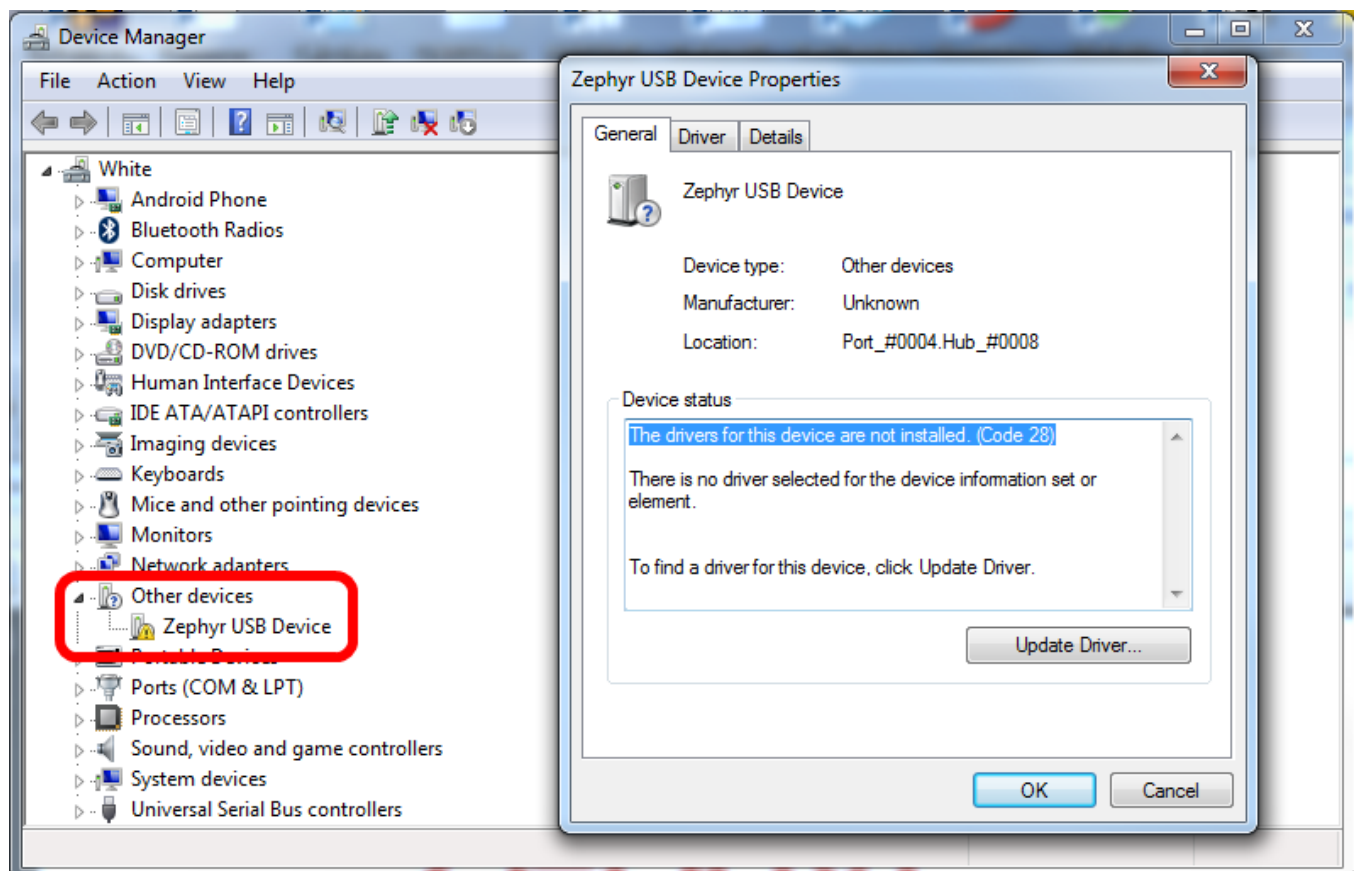
2. USING THE DRIVER INSTALLER..... 5

3. MANUAL DRIVER INSTALL..... 7

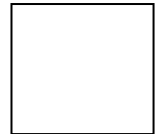
## 1. Introduction

If you have never installed OmniSense on your computer, you will need to manually install the drivers for the BioHarness in order to perform a firmware update or configure the device over USB. Otherwise your computer will not recognize the device plugged into the USB port.

You will first need to extract the zip file included with the driver install package. Then, with the BioHarness connected to the computer in the cradle over USB, if you go into the Device Manager on your computer, you will find a device listed as an 'Other Device'.



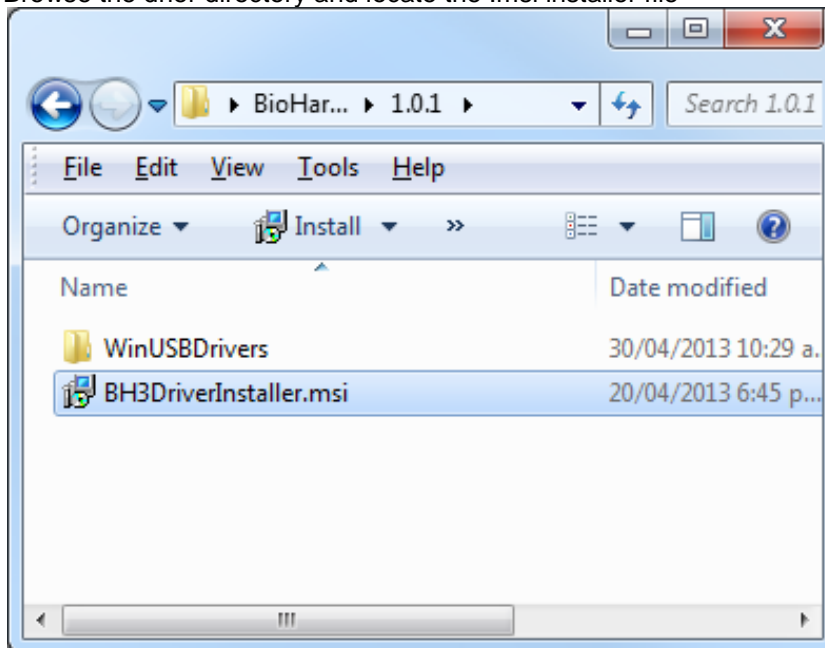
The yellow warning triangle indicates that the device (i.e. the device driver files) have not been installed on your PC.



## 2. Using The Driver Installer

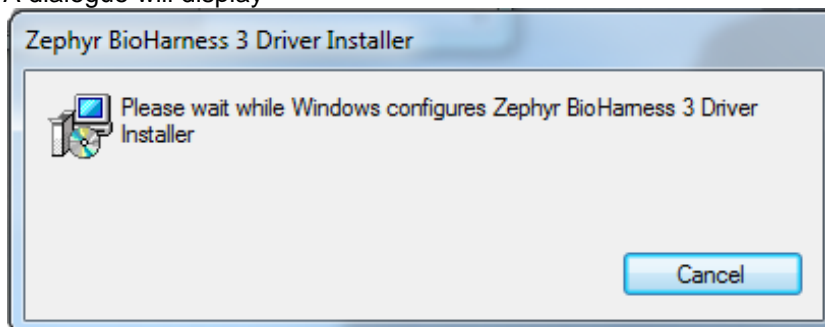
If it has not been supplied with a product, then the driver installer for the BioHarness 3 can be downloaded from Zephyr Technology Corp's website at <http://www.zephyranywhere.com/support/downloads/>

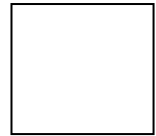
1. Download the BioHarness 3 Driver directory
2. Browse the drier directory and locate the .msi installer file



Click the installer to start the install wizard

3. A dialogue will display

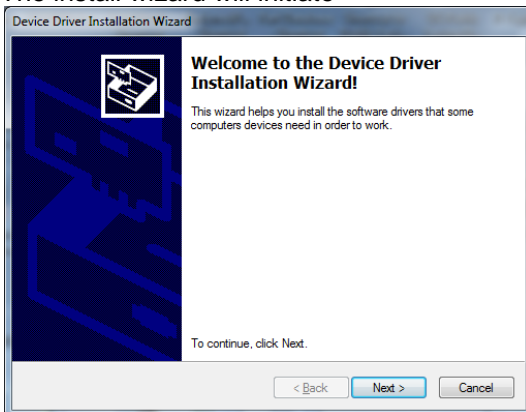




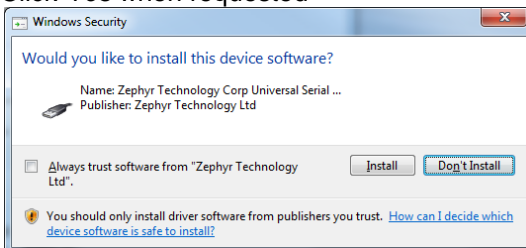
4. When the User Account Control dialogue asks if you wish to proceed, click Yes



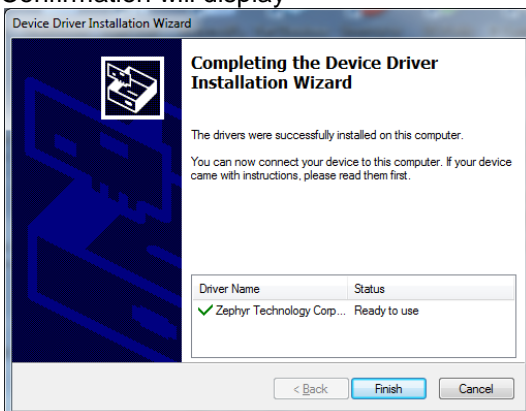
5. The install wizard will initiate

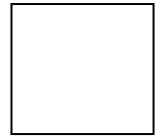


6. Click Yes when requested



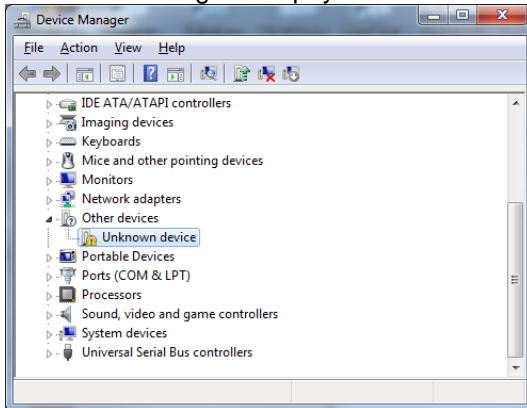
7. Confirmation will display



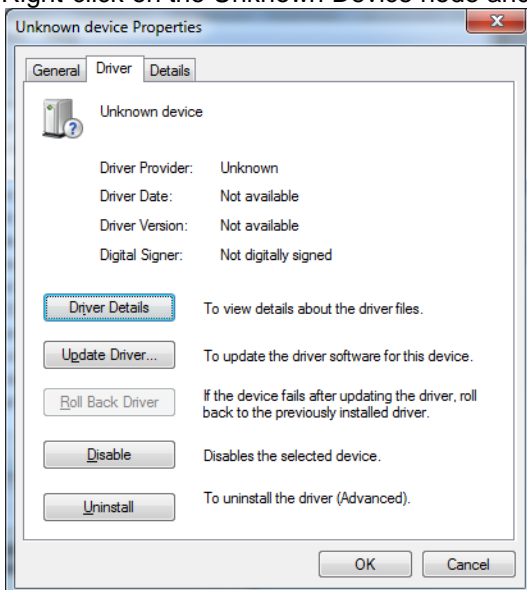


## 3. Manual Driver Install

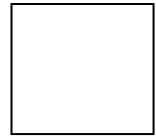
1. Connect your BioHarness to the PC using the USB charge cradle.
2. Open Windows Device Manager e.g. Start > Control Panel > System & Security .> Device Manager. Locate the node showing the Zephyr device. It will display a warning '!' icon



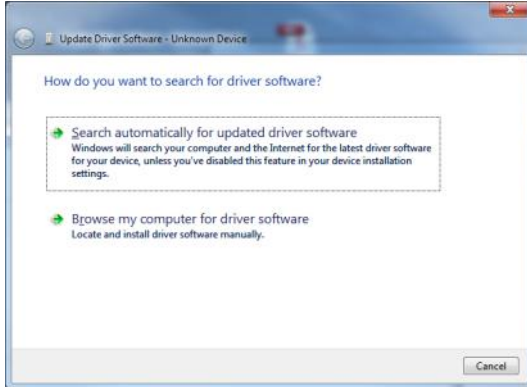
3. Right-click on the Unknown Device node and select Properties from the context menu



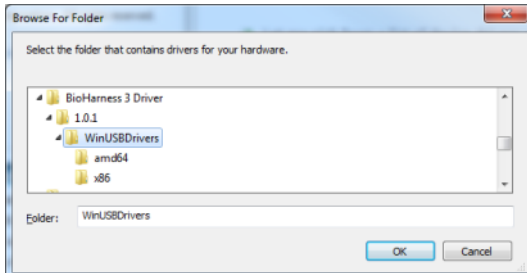
Select the *Driver* tab, and click the *Update Driver* button



4. Select the *Browse my computer for driver software* – you will need to know the location of your downloaded driver files

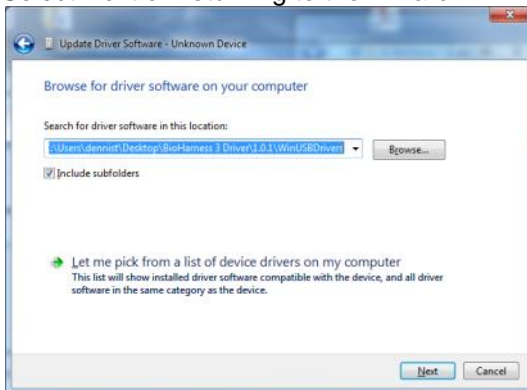


5. Browse to the location of the BioHarness drivers directory

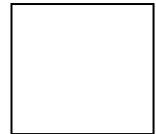


Click *OK* when you have selected the *WinUSBDivers* directory

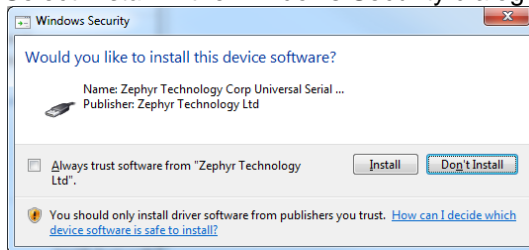
6. Select *Next* on returning to the Wizard



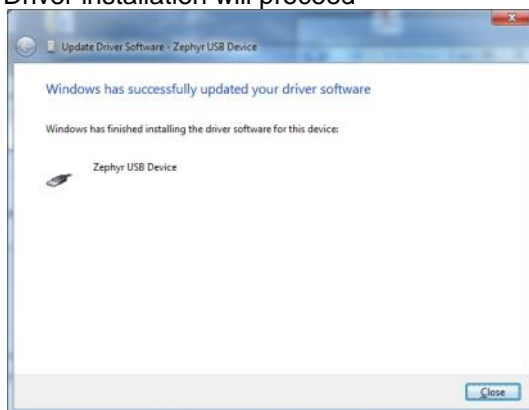




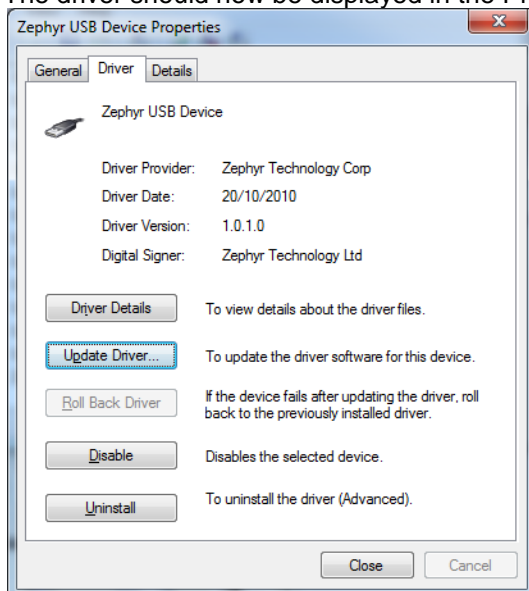
7. Select *Install* in the Windows Security dialogue

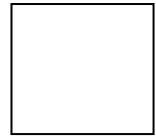


8. Driver installation will proceed

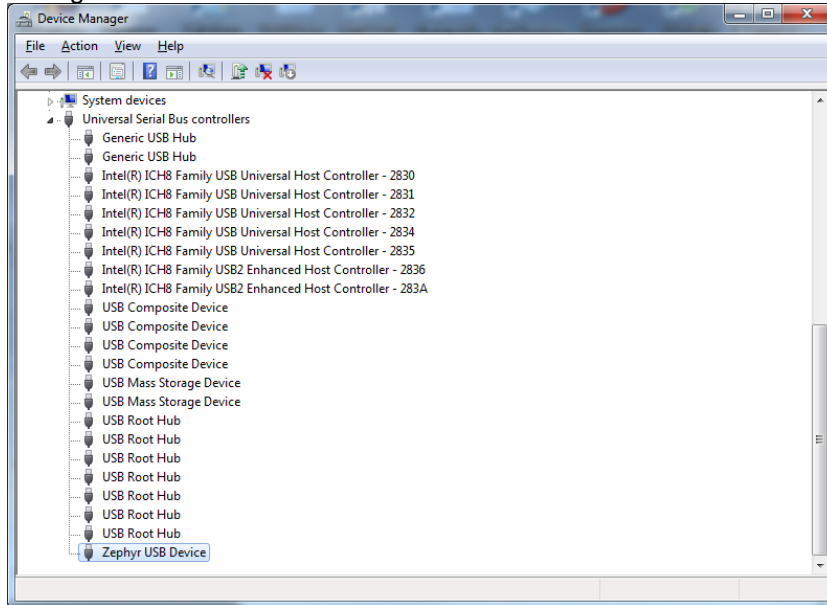


9. The driver should now be displayed in the Properties dialogue of the Device Manger for the Zephyr device





10. After successful install, the Zephyr device will be located under the USB Controllers node in the Device Manager.



Once drivers are installed, the BioModule can be used with the Zephyr Cfg Tool, The ZUSBUpdater tool, and the BioHarness Log Downloader from the BioHarness Bluetooth SDK.